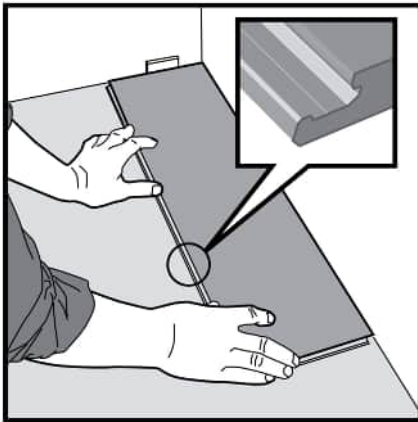


Installation & care instructions for
planeo click vinyl rigid
with footfall sound insulation
(SPC) 3,5 mm

planeo 

LVT / SPC - standard installation 2G+2G

E. Installation method for floor covering



Picture 1

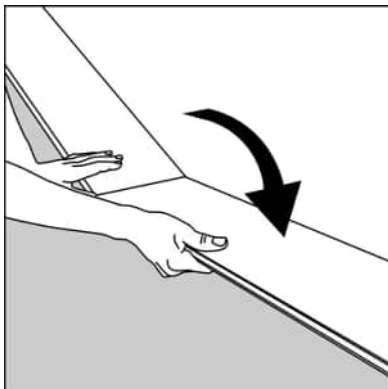
First plank, first row.

Place a gap of 8 mm thickness to the left and position the plank against the wall.

Later, after 3 rows, you can easily position the floor covering with a gap of 8 mm against the front wall.

Before laying, measure the width of the room to check whether the first row should preferably be cut lengthwise to obtain a more even width of the planks of the first and last row.

See also Picture 10.

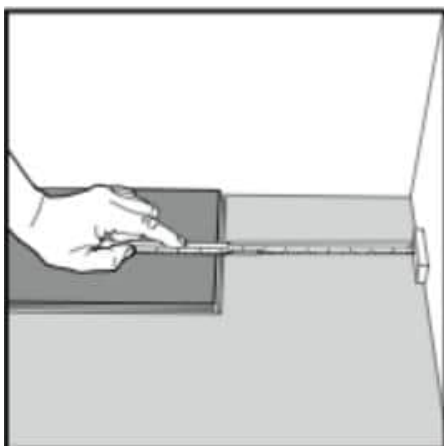


Picture 2

Second plank, first row.

Press the short end of the next plank at an angle to the first and then lay it.

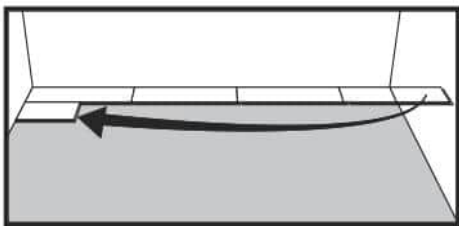
Complete the first row in the same way.



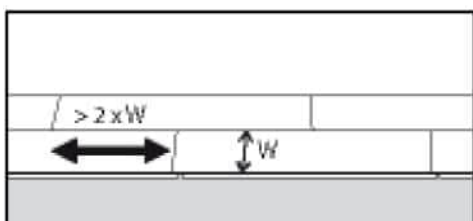
Picture 3

Keep a distance of 8 mm from the wall at the end of the first row and measure the length of the last plank for fit.

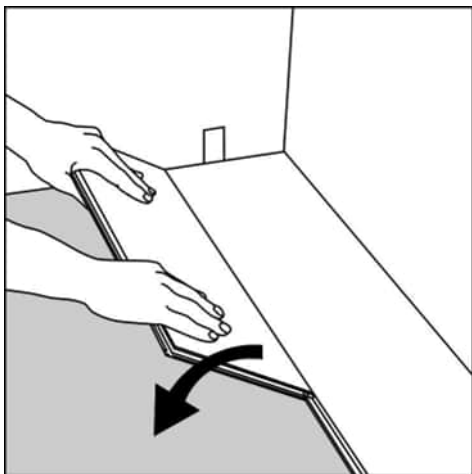
Cut the last plank to the correct length, the recommended minimum length is twice the width of the plank.



Picture 4
Second row. Lay the remaining of the last plank of the first row as the first plank of the second row. Keep double the width again as the minimum length. Leave a gap against the wall.



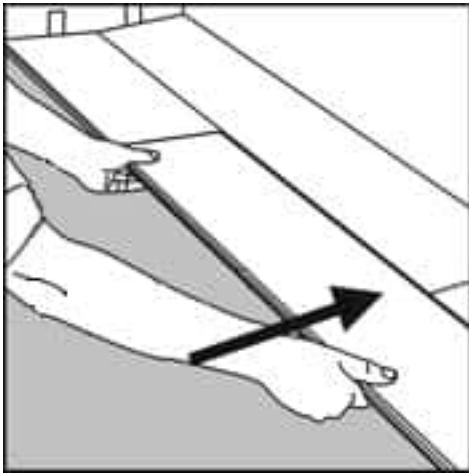
Picture 5
General. Spacing between the short ends. The minimum distance between the short ends of the planks in parallel rows must not be less than approximately twice the width of the plank.



Picture 6
Place the plank at an angle against the plank in the previous row, press forward and fold down at the same time. Leave the plank in a slightly upward position in which the planks begin to lock. Start to lock. To make this even easier a wedge with the appropriate angle near the short side edge can be placed under the plank as a support.

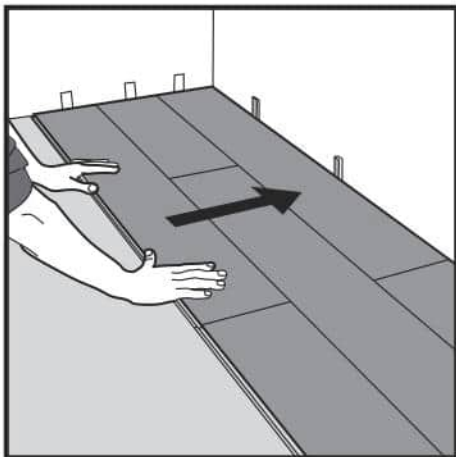


Picture 7
Second plank, second row. Lay the short end of the plank at an angle to the previously laid plank and fold it all the way down.



Picture 8

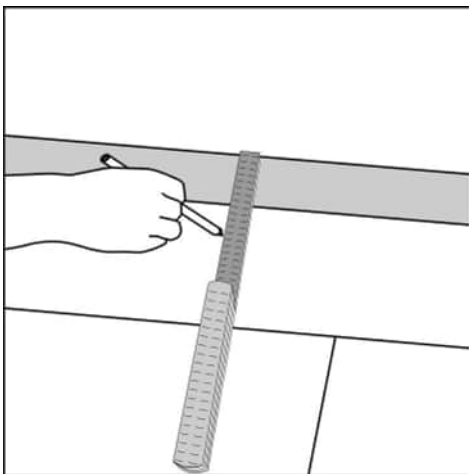
Press to push the plank against the row at the front so that it is in line with the first plank. Lay it down as with the first plank when the planks are close together. The first/previous plank can now be fully folded into the horizontal position and, using a wedge, it can be moved to the next short end piece.



Picture 9

After 2-3 rows.

Adjust the distance to the front wall with spacers of 8 mm. Keep the spacers in position for the entire duration of the installation and remove them when the installation is complete.

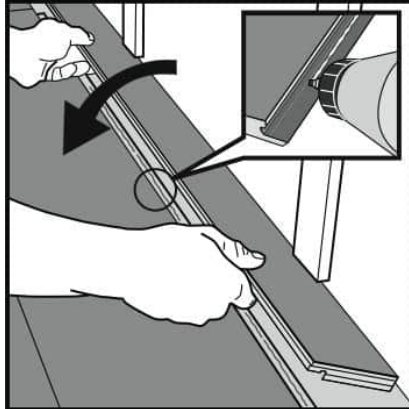


Picture 10

If the wall is uneven, the planks must be adapted to its contours. Mark the planks with the contour of the wall. Do not forget to leave a gap of approx. 8 mm to the wall.

This procedure should also be used for the first row if necessary.

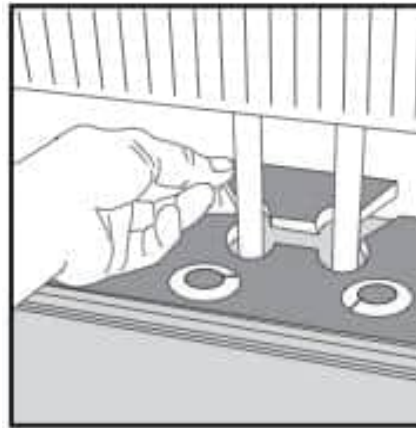
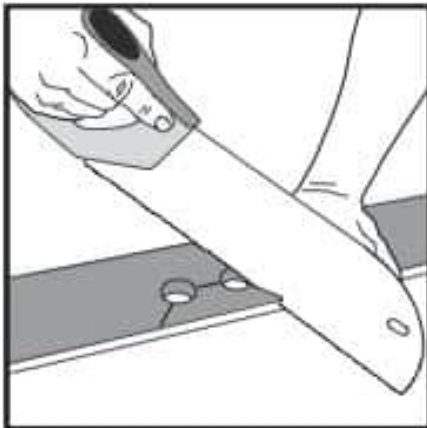
Horizontal installation



Picture 11 and 12

Remove the locking element with a chisel, apply the appropriate adhesive to the set strip and push the planks together horizontally. If necessary, place some spacers between the last plank and the wall during the curing time of the adhesive. The procedure can also be applied to the short ends. and note the "Curing time of the adhesive."

Radiator pipes - principle section



Picture 13 and 14

Installation on e.g. radiator pipes. Mark the center of the holes and drill the hole with a diameter that is approx. 16 mm larger than the pipe diameter (= 8 mm clearance all round), cut as shown with a saw or a sharp utility knife. Lay the plank. If necessary, apply adhesive to the cut part and replace it.