

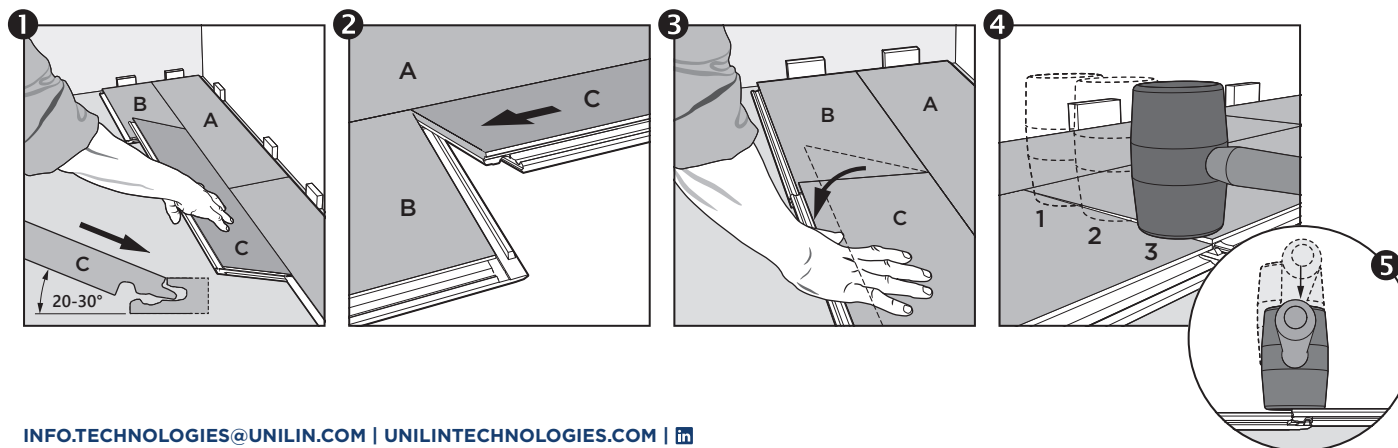
INSTALLATION

1. To be able to correctly install the short sides of panels (B) and (C) using the Unipush system, first install a panel (A) as support for the long side alignment of panels (B) and (C). The **long sides of the panels** can be joined with a **Uniclic locking system, using an angle movement**, as shown in figure 1. Be sure to connect the **groove of plank (A) with the tongue of planks (B) and (C)**.

2. When plank (B) is correctly installed on the long side, position the left corner of the head end of plank (C) against the previous panel and **drop the short side of the panel down with a single action movement into the head end of the adjacent panel (B)**. See figures 2 and 3. During the fold-down, make sure that the panels are close to each other and the long side of the panels is correctly installed.

3. Make sure **each end joint is completely engaged by pushing down onto the joints along the whole short side** of the panel to ensure both panels are positioned correctly, manually or by using a tapping block.

4. Use a **hammer to fully connect** the short sides of the panels, see figure 4. **The hammering should be done in the direction of and partly on the underlying panel**, see figure 5. Be careful not to damage the profile or edges when engaging the panels.



DISASSEMBLY

1. **Separate the whole row by carefully lifting up** and release the whole row, as shown in figure 6.

2. Horizontally shift the short side connection, as **shown in figure 7**, or use an angle movement as **shown in figure 8**.

Do not disassemble in any other way, as shown in figures 9-10.

